

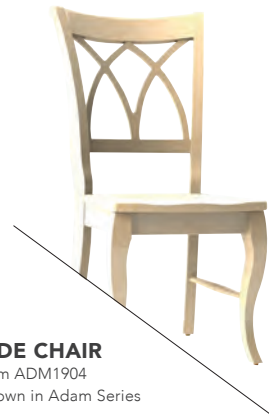
# CHAIRS

MAVIN chairs can be ordered in a multitude of styles. Most can be ordered as a side chair or arm chair. All chairs are available with all finishing options, except where noted. Chairs can be paired with any MAVIN dining table top and table base to create your one-of-a-kind aesthetic.

PART NUMBERS ENDING IN 02 OR 04 SPECIFY A WOOD SEAT, AND PART NUMBERS ENDING IN 12 OR 14 SPECIFY AN UPHOLSTERED SEAT.



CHAIR: Brooklyn, Maple Wood & 3P Black Paint



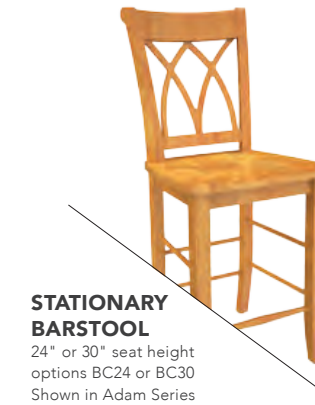
**SIDE CHAIR**  
item ADM1904  
Shown in Adam Series



**ARM CHAIR**  
item ADM1902  
Shown in Adam Series

# BARSTOOLS

Barstool seating is also available. Most of our chairs are available as barstools and can be stationary or swivel, with or without arms. Begin by selecting a chair style and then choose your desired barstool configuration. All barstools can be ordered with your choice of wood, stain, fabric and finishing options. Special barstools are also available in certain series that are shown below.



**STATIONARY BARSTOOL**  
24" or 30" seat height  
options BC24 or BC30  
Shown in Adam Series



**STATIONARY ARM BARSTOOL**  
24" or 30" seat height  
options BC24 or BC30  
Shown in Adam Series



**SWIVEL BARSTOOL**  
24" or 30" seat height  
options SW24 or SW30  
Shown in Adam Series



**SWIVEL ARM BARSTOOL**  
24" or 30" seat height  
options SW24 or SW30  
Shown in Adam Series



**GRACE BARSTOOL**  
24" or 30" seat height  
options BC24 or BC30  
Choice of fabric  
Swivel base not available



**STATIONARY BACKLESS BARSTOOL**  
24" or 30" seat height  
item BKL6704  
options BC24 or BC30



**SWIVEL BACKLESS BARSTOOL**  
24" or 30" seat height  
item BKL6704  
options SW24 or SW30



**ROUNDED BACKLESS BARSTOOL**  
24" or 30" seat height  
Stationary or Swivel seat  
item BKL6804  
item shown BKL6814  
options BC24, BC30, SW24 or SW30



**SADDLE BARSTOOL**  
24" or 30" seat height  
item SAD604  
options BC24 or BC30

NO SPECIFIC CHAIR STYLE NEEDS TO BE CHOSEN FOR THESE ITEMS.

They are built as shown with your choice of wood, stain, fabric and finishing options.

# WOOD

The same chair or table made from two different species of wood can look and feel drastically different. Variances in grain, tone and texture create character, personality and emotion. MAVIN offers nine beautiful choices of wood for dining furniture.



## MAPLE

Unique color, smooth grain and strength make maple a popular choice among woodworkers of all types. Small closed knots and slight mineral streaks that become greatly enhanced when a stain is applied.



## QUARTER SAWN OAK

The term quarter sawn refers to the way the log was cut. The reason for doing this is to capture the medullary rays or "flakes" that create an authentic old world look. With the right stains, the flakes take on a majestic shimmer.



## OAK

Oak comes in a variety of hues, with a unique grain, which makes it one of the more recognizable species. A common choice, it has a long history of use around the home. Oak is a mainstay in traditional design, but its versatility allows modern pieces to come to life.



## RUSTIC OAK

Featuring all the same qualities of traditional Oak, it offers other characteristics such as natural knots, more prominent mineral streaks and natural wood checks. It can be significantly enhanced with stains to showcase traditional styles or a fresh modern piece.



## CHERRY

Harvested from cherry fruit trees, it is a hardwood famed for its durability and rich red/brown tones. Woodworkers highly prize cherry because of its smooth grain, flexibility and brilliant color.



## RUSTIC CHERRY

Featuring white, brown, and deep red colors with brown flecks, Rustic Cherry is a less refined version of traditional Cherry. It boasts natural knots and pits throughout each board with fine satin-smooth texture and a circular grain. It will darken with exposure to light and heat.



## WORMY MAPLE

Also known as Ambrosia Maple, this is a specific grade that is selected and sorted to showcase the color variations and mineral streaks caused by the Ambrosia beetle. Colors and the flowing patterns vary significantly with dark brown streaks near small wormholes.



## WALNUT

Black walnut is highly prized for its dark-colored, true heartwood. The sapwood is cream colored, while the heartwood ranges from light brown to a dark, almost chocolate colored brown, sometimes with hints of purple and with dark streaks. Most walnut wood has a straight grain, although wavy or curly grain does occur.



## ELM

Elm can have a beautiful straight or interlocking grain pattern and is known for its resistance to splitting. When finished with our Michaels stain, this species is breathtaking. Elm is only offered in one other color variant – Gravel stain.

# STAINS PAINTS & GLAZES

For samples of all our available stains and paints, see our MAVIN Creation Center for wood samples. Wood samples should be viewed using the exact stain/paint color and wood species requested for the most accurate representation of color.

## STAINS



100 **NATURAL**



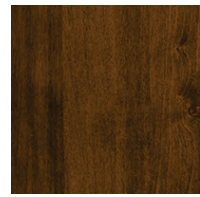
104 **SEELY**



111 **BOSTON**



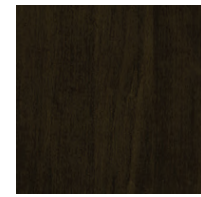
113 **MICHAELS**



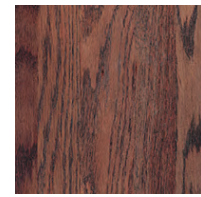
228 **RICH TOBACCO**



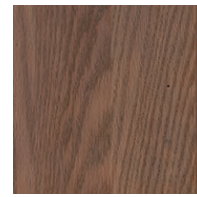
230 **ONYX**



304 **CHARCOAL**



317 **GRAVEL**



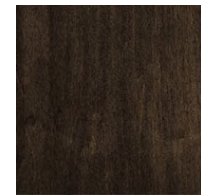
320 **SAND**



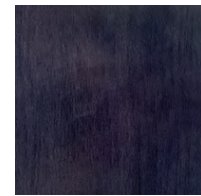
400 **BELAIR**



401 **CIDER**



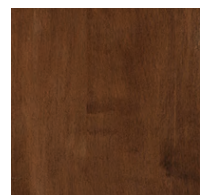
402 **MOCHA**



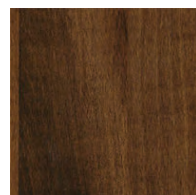
403 **INDIGO**



404 **BRINDLE**

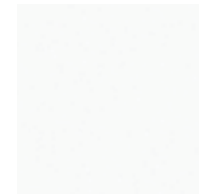


405 **RUSSETT**

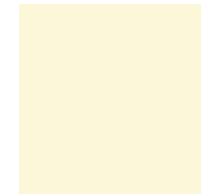


7992 **ASBURY**

## PAINTS



1P **WHITE**



2P **CREAM**



3P **BLACK**



4P **BARN RED**



6P **CREAMY BUTTER**



13P **SKY BLUE**



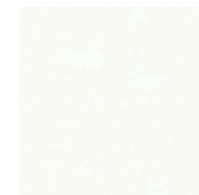
14P **OLIVE GREEN**



16P **DECORATOR WHITE**



17P **GEORGIAN**



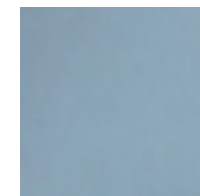
18P **FROST**



20P **KOHLER ALMOND**



21P **SUNBURST**



22P **SLATE BLUE**



23P **DUSK**



24P **CHELSEA GREY**



25P **SPRUCE**



26P **BLUE SAGE**



27P **MINT**

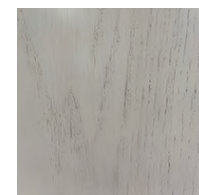


28P **TICONDAROCA TAUPE**

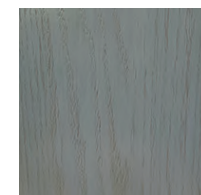


29P **ASH**

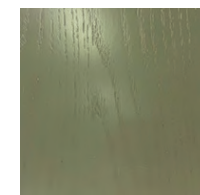
## SAVANNAH GLAZES



1P **SAVANNAH GLAZE ON WHITE**



13P **SAVANNAH GLAZE ON SKY BLUE**



14P **SAVANNAH GLAZE ON OLIVE GREEN**



21P **SAVANNAH GLAZE ON SUNBURST**

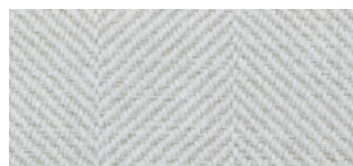
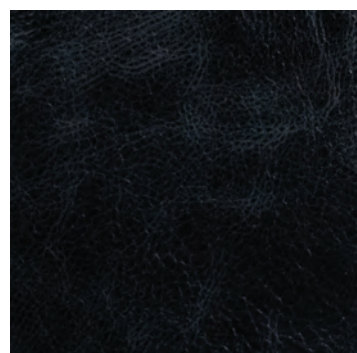
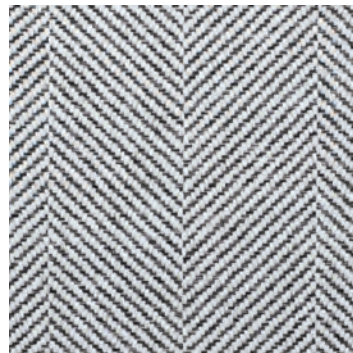
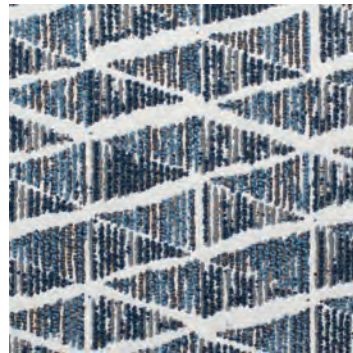
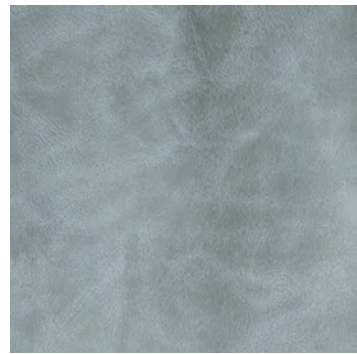
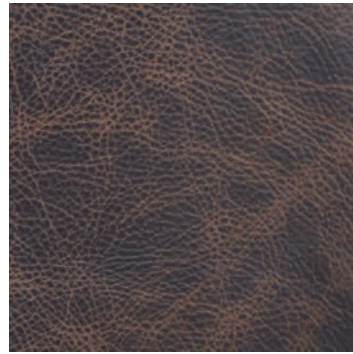
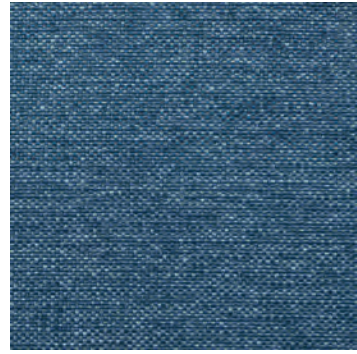
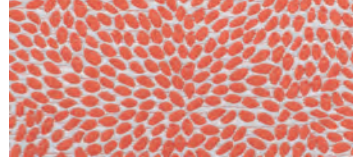


27P **SAVANNAH GLAZE ON MINT**

# FABRIC

Here at MAVIN, we want to ensure that every customer has an amazing selection of products to choose from. This is no different when it comes to an assortment of fabric choices for our seating options. There are a plethora of fabrics available and the list keeps expanding.

For a current list of fabric options, please visit a MAVIN Creation Center.



# HARDWARE

Just as it is with our other customization options, an astounding selection of hardware is available. Each dining case comes with standard hardware that is item specific, however this can be swapped and upgraded to fit exactly what you desire.

For a current list of hardware options, please visit a MAVIN Creation Center.

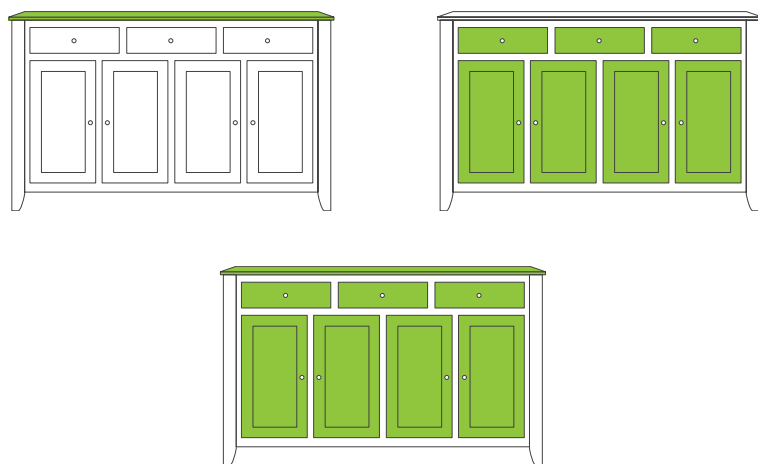


# TWO TONE

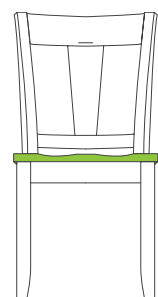
Your furniture can be completely customized, right down to a different stain on the seat of the chair or a special paint color for your cabinet doors. Two colors of stain can be chosen or a paint and stain combination can be selected to give you the color that matches your decor, while keeping the warmth of that beautiful wood glow. You imagine it and we create it.

## AVAILABLE COMBINATIONS

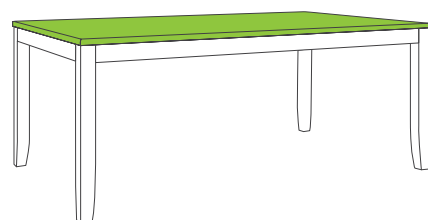
### CASES



### CHAIRS



### TABLES



# EDGE TREATMENTS

We offer edge treatments to add an additional layer of customization to every piece of furniture. The edge treatments we offer include Burnishing and a Paint Rub Thru Treatment.

## BURNISHING



Our expert craftsmen can add shading on the outside edges of each piece using a darker tone to give your furniture a beautiful, burnished look.

## PAINT RUB THRU



After your piece is painted, the edges are sanded to let the natural beauty of the wood peek through. This option offers a well-worn look for a more casual atmosphere.